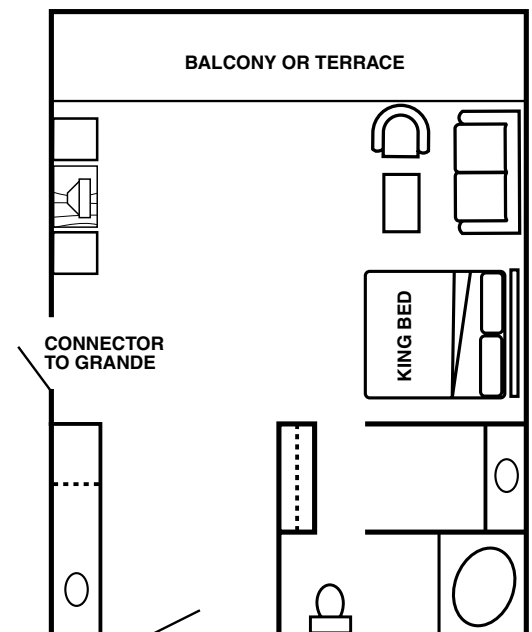


Spa Executive Suite



Spacious, comfortable and contemporary. That's the perfect description of the Spa Executive Suites at Doral!® King-sized beds with pillow-top mattresses, a full wet bar with ice maker, refrigerator, marble countertops and a sitting area with couch, oversized chair and flat-screen TV complete a singular design. Each guest room includes a desk and chair, full bath and exquisite views including some overlooking the lush green of the golf courses. Bedroom amenities feature a bathrobe, coffee maker, in-room safe and an iron and ironing board. A digital clock radio, high-speed Internet access and daily newspaper delivery complete an accommodation package, assuring guests the most comfortable of experiences at Doral.

Square Footage = 716

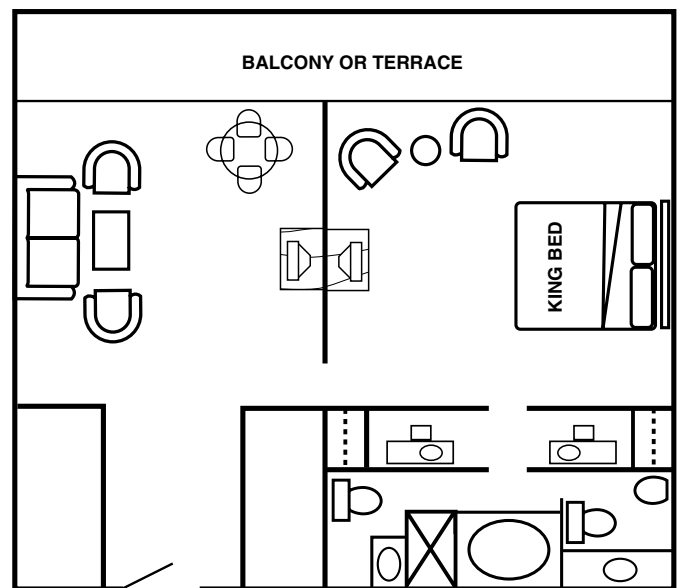


Spa Master Suite (King)



These new suites consist of roomy and comfortable guest bedrooms with freshly designed and decorated adjoining living rooms. The Spa Master Suites feature king-sized – or two queen-sized – beds with pillow-top mattresses, a full wet bar with ice maker, refrigerator, marble countertops and comfortable leather sitting chairs. His-and-her bathrooms complete with bathrobes and bath amenities provide privacy and the ultimate in luxury. Fresh and distinctive carpeting throughout enlivens the suites that are equipped with flat-screen TVs, high-speed Internet access and daily newspaper delivery.

Square Footage = 1,093

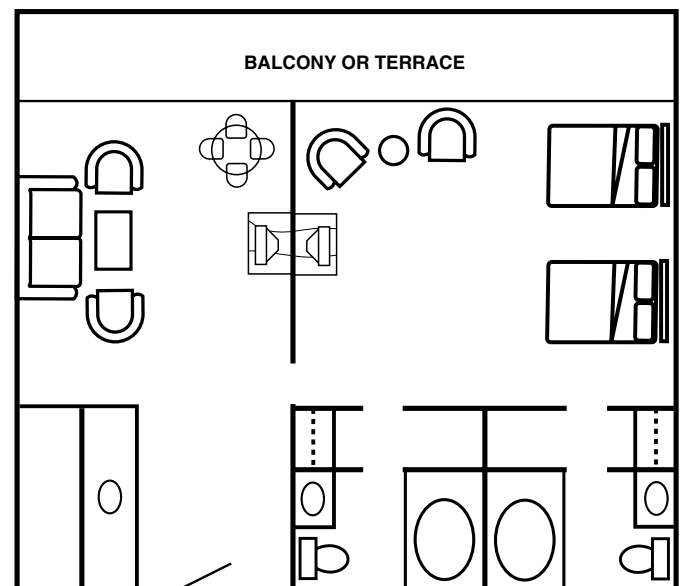


Spa Master Suite (Queen)



These new suites consist of roomy and comfortable guest bedrooms with freshly designed and decorated adjoining living rooms. The Spa Master Suites feature king-sized – or two queen-sized – beds with pillow-top mattresses, a full wet bar with ice maker, refrigerator, marble countertops and comfortable leather sitting chairs. His-and-her bathrooms complete with bathrobes and bath amenities provide privacy and the ultimate in luxury. Fresh and distinctive carpeting throughout enlivens the suites that are equipped with flat-screen TVs, high-speed Internet access and daily newspaper delivery.

Square Footage = 1,093

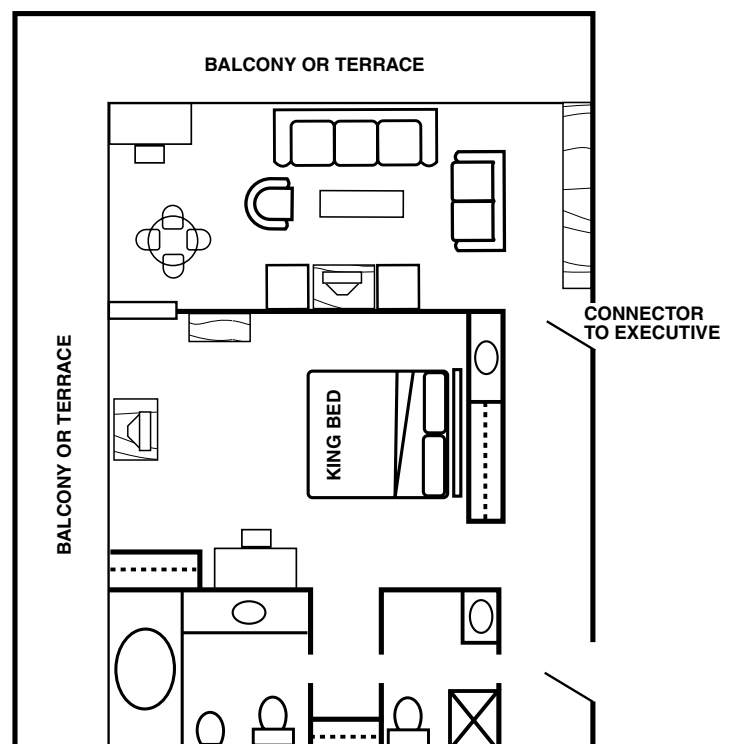


Spa Grande Suite



The ultimate in luxury, the newly decorated Spa Grande Suites are corner suites offering wrap-around balconies complete with sweeping views of the lush green golf courses. Bedrooms, complete with king-sized beds with pillow-top mattresses, are separated from the rest of the suite by classic French doors for greater privacy. The newly re-imagined and refreshed sitting or living room features comfortable couches and chairs, a flat-screen TV, full wet bar, refrigerator, marble countertops and a full-sized dining room table as well as high-speed Internet access for faster online communication. The full baths include Jacuzzi® tubs, comfortable bathrobes, coffee makers and a mini bar. As with all our suites, a newspaper is provided daily.

Square Footage = 1,093

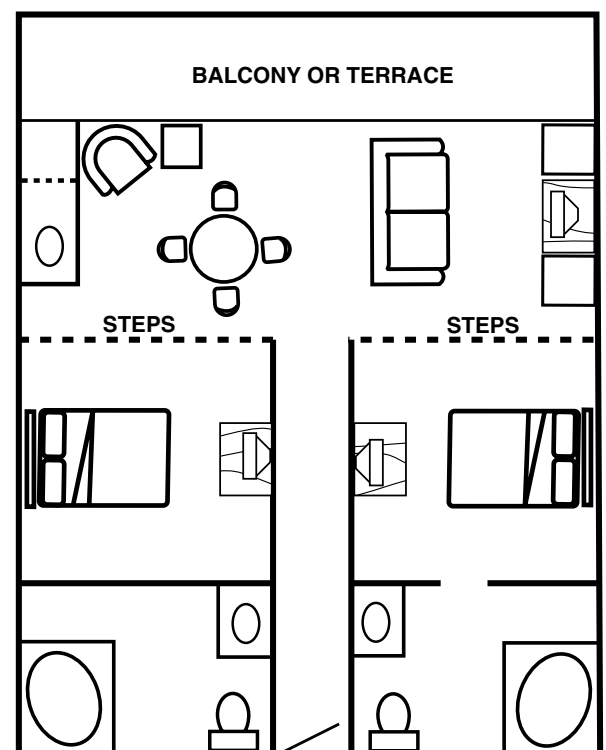


Spa T-Suite



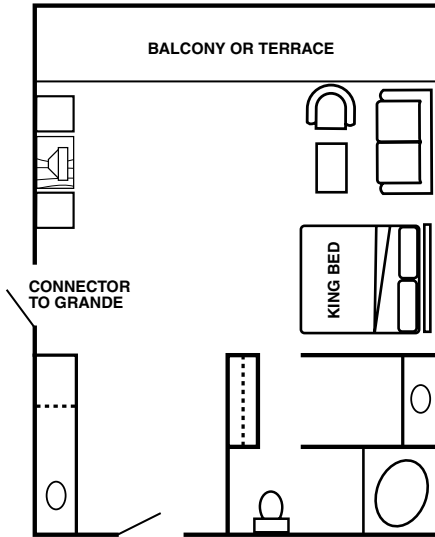
The quintessential spa experience at Doral is the Spa T-Suite, an elegantly appointed master suite with two bedrooms, two private baths and a full living room. The bedrooms are situated in an elevated T shape off the newly redecorated living room, which features a dining room area with table for late-night dining. A flat-screen TV, high-speed Internet access and club décor make this living area one both of productivity and sanctuary. Both bedrooms feature queen-sized beds with pillow-top mattresses and an assortment of personal comfort amenities, including terrycloth bathrobes and assorted bath products. The spacious suite bathrooms include Jacuzzi® tubs for lingering relaxation.

Square Footage = 1,100

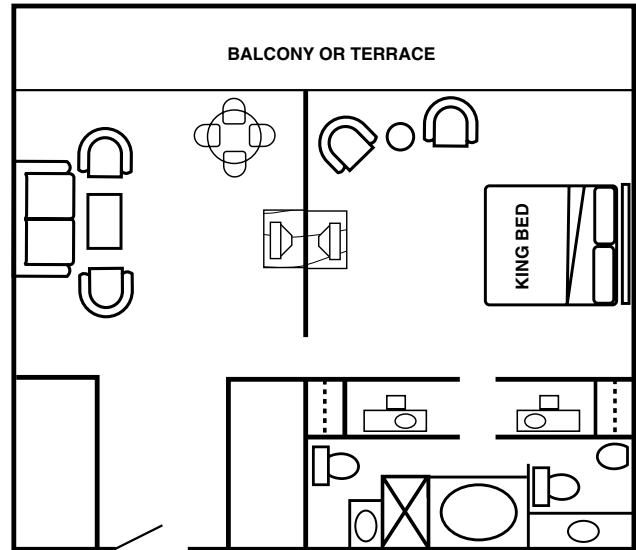


Spa Suites

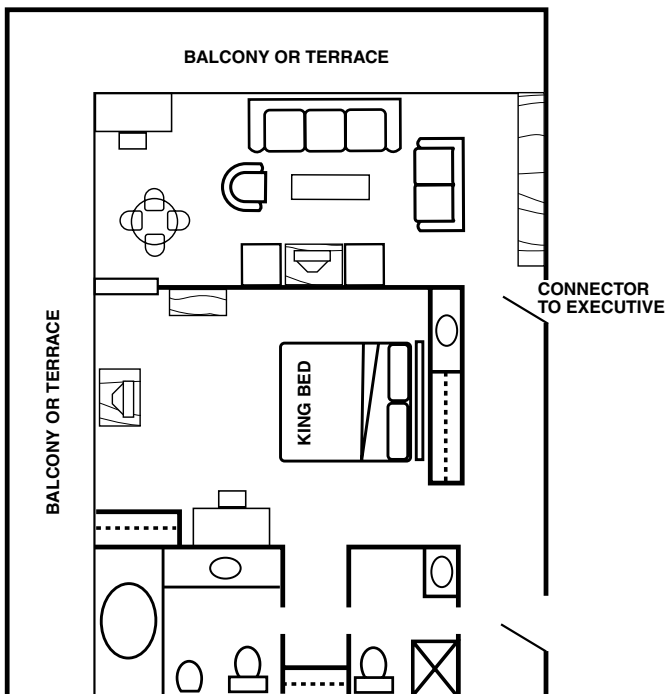
SPA EXECUTIVE SUITE



SPA MASTER SUITE



SPA GRANDE SUITE



SPA T-SUITE

